

# Year 1: Plants

## WHAT?

### RECOGNISE BY SIGHT:

Rose Bush



Sunflower



Dandelion



### RECOGNISE BY SIGHT:

Oak Tree



Birch Tree



Horse Chestnut Tree



### TYPES OF TREE:

Evergreen trees maintain their leaves throughout the year.

Deciduous trees shed their leaves in autumn.

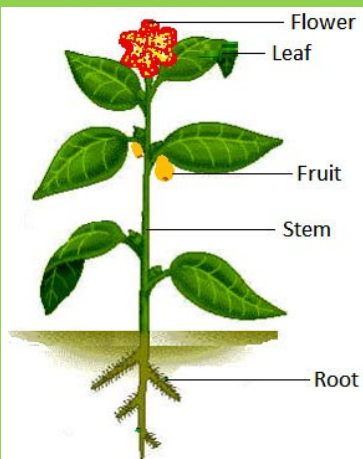


Deciduous



Evergreen

### PARTS OF A PLANT:



## KEY VOCABULARY



**BRANCHES:** parts that grow out from the tree trunk and have leaves, flowers or fruits growing



**BULB:** a root shapes like an onion that grows into a flowering plant



**COMMON:** something that is found in large numbers or it happens often



**COMPONENT:** a part of something



**DECIDUOUS:** a tree that loses its leaves in autumn every year



**ENERGY:** the ability to do work



**EVERGREEN:** a tree that does not lose its leaves and whose leaves stay green all year.



**FLOWER:** part of a plant that's brightly coloured and grows at the end of the stem



**FLOWERING:** trees or plants which grow flowers



**FRUIT** something which grows on a tree or bush which contains seeds or a stone covered in a substance which can be eaten.



**GARDEN:** a piece of land next to a house, with flowers, vegetables, other plants and often grass.



**GROWTH:** the process of increasing in size.



**HERB:** a plant whose leaves are used in cooking to add flavour to food, or as a medicine.



**LEAF:** the part of a plant or tree that is flat, thick and often green.



**PETAL:** thin coloured or white parts which form part of the flower.



**PLANT:** living thing that grows in the earth and has a stem, leaves and roots.



**ROOTS:** the parts of plants that grow underground.



**SEED:** the small, hard part from which a new plant grows.



**STEM:** the main body or stalk of a plant.



**TREE:** a tall plant that has a hard trunk, branches, and leaves structure



**TRUNK:** a large stem of a tree from where branches grow



**VEGETABLE:** plants such as cabbages, potatoes, and onions which you can cook and eat



**VEGETATION:** plants, trees and flowers



**WEED:** a wild plant that grows in a garden and prevents plants that you want from growing properly.